

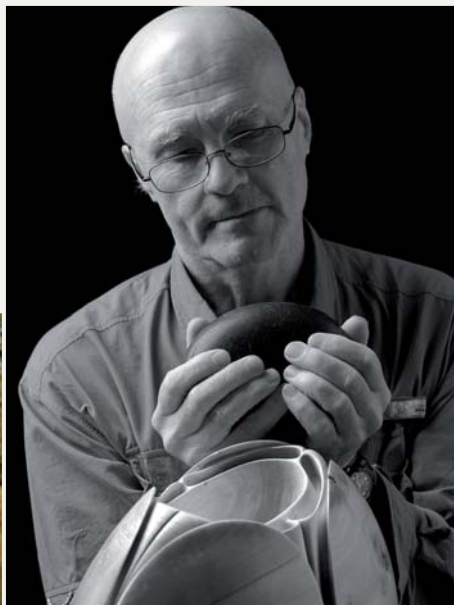


WINDGROVE

A REFUGE FOR LEARNING



Art should include, but move beyond a pleasing aesthetic.
It must be transformative to a person's life.
And the earth's.



WINDGROVE

Nestled among she-oaks, on rugged cliffs overlooking wild seas, Windgrove is a truly special place: a refuge for contemplating, connecting and being inspired to create new futures.

Not that long ago it was largely barren, degraded sheep country. A sad shadow of its former wild coastal landscape.

Since purchasing Windgrove in 1991, internationally renowned sculptor and passionate environmental champion Peter Adams, has laboured tirelessly to restore and transform the landscape. In the process Peter, himself, has been transformed by the land.

To date Peter's Windgrove has ensured that over 9,000 new trees are now firmly rooted and the fragile sandy soils have slowly rebuilt, encouraging the wildflowers to re-establish and the birds and native animals to return and flourish. Amongst the circles of burnished, tasselled she-oaks Peter has created large scale Earth Art installations, including the Peace Garden, the Peace Fire and the Gaia Evolution Walk.

Both the art and the landscape at Windgrove speak powerfully to the opportunity for a new way of being. Disillusionment and disconnection are prevalent in today's troubled world. At Windgrove a deeply felt interconnectedness encourages visitors to engage in positive action and form valuable relationships.

For the past 20 years, owner/custodian Peter Adams, has welcomed students, art-based tour groups, artists, philosophers, activists and dreamers to share his home. He has also hosted several large scale public events, including two editions of *Sculpture by the Sea*, which together attracted 20,000 visitors. People of all ages and from all continents have enjoyed and benefitted from the peace, beauty and transformative energy of Windgrove.

Now Windgrove is poised to spread its wings and take the next big step in its own evolution.



SHARING WINDGROVE WITH THE WORLD

Windgrove, with its 1km long coastal frontage, is situated on the Tasman Peninsula in south-east Tasmania, Australia. It overlooks the wild surf of Roaring Beach, offering stunning uninterrupted ocean vistas across Storm Bay to Antarctica, some 3,000km away.

Bounded by the Roaring Beach Conservation Zone to the south and west, Windgrove is largely protected from the indiscriminant development that has sadly befallen similar coastal landscapes along Australia's eastern seaboard. In future years Windgrove will be an increasingly rare and valuable piece of the world's remaining natural heritage.

In a small discreet building envelope on the 65 acre property sits Peter's private home, extensive gardens, studio and out-buildings – including the historic Peace Bus which was Peter's home for the eight years it took him to build his house.

To continue to support its aims and expand its reach, Windgrove requires new facilities and a modest self-sustaining income stream into the future.

To this end, a long-held dream of a new small-scale, eco-development on the property is now taking shape.

On-site accommodation and creative spaces will offer more people the opportunity to experience this special landscape, explore creative connections and gain new skills and understandings that will help them deal with the increasing challenges of our changing world.

Visitors staying at Windgrove will be able to walk the land, converse and contemplate, confront outdated worldviews and inquire deeply into critical social, environmental and scientific issues. Through these facilitated experiences, participants will return to their homes, schools, communities and organisations, refreshed and inspired to achieve personal peace and be empowered to contribute to creating the significant changes that the world needs now.



WINDGROVE, ROARING BEACH



A SENSE OF PLACE



Since its very early days, a multitude of retreats and workshops have been held at Windgrove. Participants have camped on site, stayed as guests in Peter's home, or travelled daily from other local accommodations. In order to continue to offer and expand the range of valuable residential experiences at Windgrove, provision of appropriate onsite accommodation and workshop space is now essential.

A nest of proposed eco-cabins will serve two purposes: firstly, to provide overnight accommodation for residential workshop participants, visiting artists and changemakers, and secondly, to provide occasional higher-end accommodation for small groups wanting an exclusive experience of this wild and peaceful part of Tasmania. Income from these 'full-fee paying' guests will provide an all important future income stream that will assist with all necessary ongoing maintenance requirements on the property and support the workshop program and overall educational experiences.



CONTINUING TO CONNECT



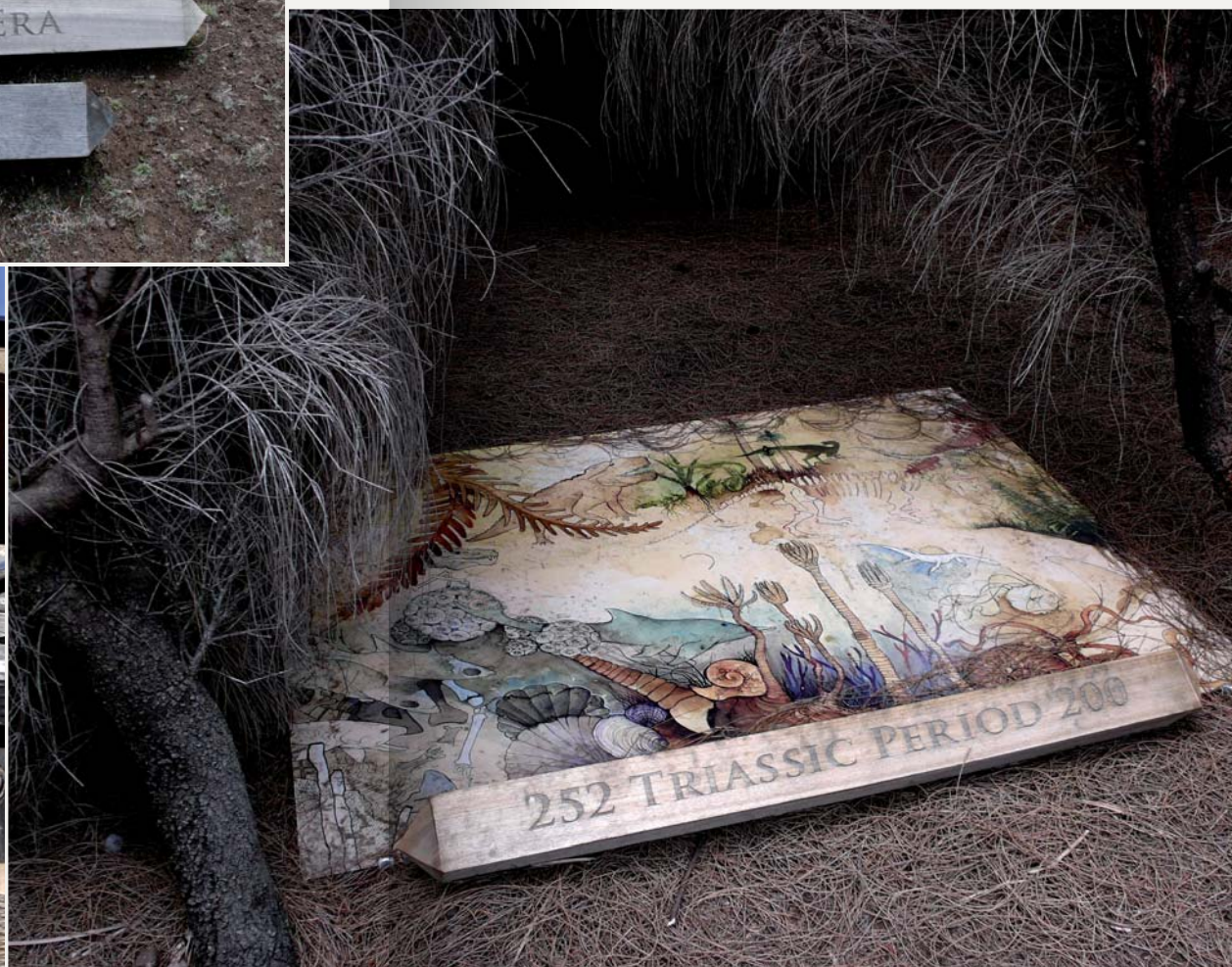
ARTISTS-IN-RESIDENCE

With his strong connections to local, national and international communities, Peter continually receives requests for residential visits. Since 2003, more than 25 local and international visual artists, musicians, writers and environmental/social activists have stayed at Windgrove at Peter's invitation and personal expense. Currently, opportunities are restricted to one subsidised residency at a time. New facilities will expand opportunities for emerging changemakers to experience this inspirational place, grow their audience and share their creative skills with visitors.

PUBLIC EVENTS

In 1998 Windgrove was one of five locations for *Sculpture by the Sea*, auspiced by the Olympic Arts Festival *A Sea Change*. Curated by David Handley, 8,000 visitors came to Windgrove over 17 days. Featuring artists from around the world, *Sculpture by the Sea*, was staged again in 2001 as a key event within the inaugural *10 Days on the Island* arts festival. On this occasion, 12,000 people visited Windgrove.

New facilities will assist Windgrove to once again host seasonal public events that benefit the broader community, increase the profile of the area and raise awareness of the value of arts-nature connections.



STUDENT VISITS

Over the past few years, Peter has welcomed students and their teachers from the local Tasman District School, from Hobart schools visiting on day trips and from interstate and international institutions. The Gaia Walk especially provides rich learning opportunities for students of all ages, with the feedback being very positive from all visitors.

The Walk meanders through coastal vegetation, surprises with breathtaking lookouts and provides carved benches for contemplation. Intriguingly signposted, the 1.2km path invites walkers to step back in time 600 million years and progress to the present, with each footstep representing the passing of 500,000 years. The Gaia Evolution Walk provides a unique physical opportunity to experience the evolution of life on Earth whilst walking a stunningly beautiful coastal trail.

Future possibilities for deeper engagement with young learners are limitless.

COMMUNITY PARTNERSHIPS

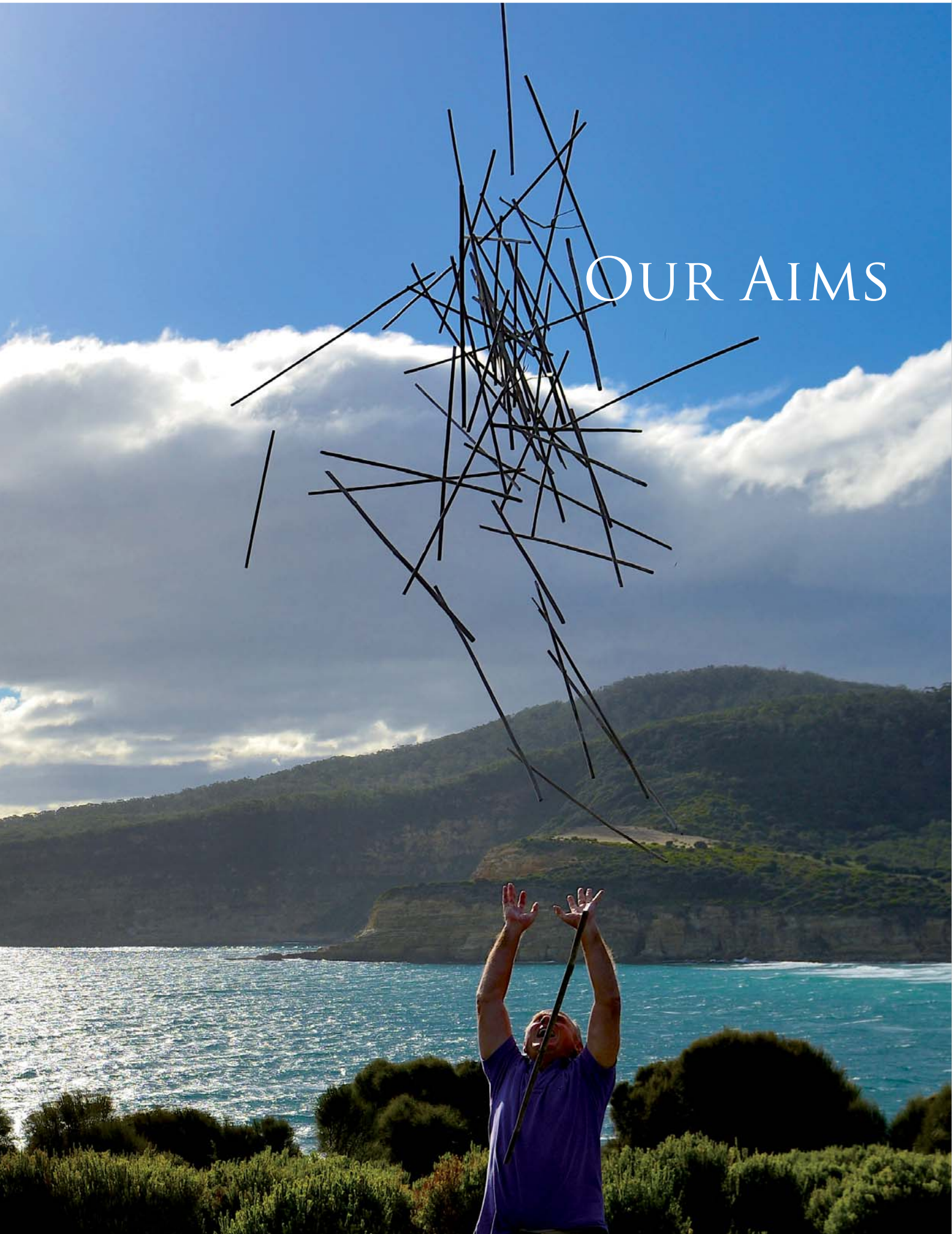
Special events held at Windgrove will attract more visitors to the region than can be accommodated on site; overflow will be directed to local tourism and hospitality businesses. Seasonal guest flow, especially when scheduling larger special events, will be managed in conjunction with state, regional and local tourism bodies.

Local food and beverage producers will be approached to provision catered workshops, local bus companies can provide airport shuttle services, and local persons will be employed as guides, kitchen and grounds staff and to service the accommodation units and other facilities. Local schools will benefit from the additional opportunities offered by visiting artists and workshop providers.

Local residents will be encouraged to participate in and/or offer workshops.

PHILANTHROPIC OPPORTUNITIES

Windgrove provides a vehicle for businesses, organisations and individuals to support transformational change through the art-nature-based experiences offered at Windgrove, by providing them with a tax-deductible gifting opportunity.



OUR AIMS

Windgrove aims to support and encourage people to achieve personal peace and become positive 'changemakers' in their communities and in the world.

OBJECTIVES

- > To provide a nurturing space for Art-Nature based learning
- > To provide access to a formal, teacher led residential experience
- > To provide studio and residential access to artists in all genres
- > To provide educational opportunities for local, state and interstate students
- > To provide a venue for public cultural events

DELIVERABLES

New Cultural Organisation

- > The establishment of a new Not-For-Profit incorporated entity to catalyse, oversee and administer the cultural activities at Windgrove
- > The entity will establish a public fund to receive tax-deductible donations from those who wish to invest in meaningful culture-based experiences in Tasmania

New Infrastructure

- > **10 new Ecoshelta cabins**
studio/bedroom with private bathroom facilities
- > **Shared Gathering Area**
with kitchen facilities, dining area and lounge room
- > **Conference Room**
multi-purpose workshop space
- > **Museum**
Peter Adams' sculptures
- > **Gallery**
commercial outlet for artwork and exhibitions

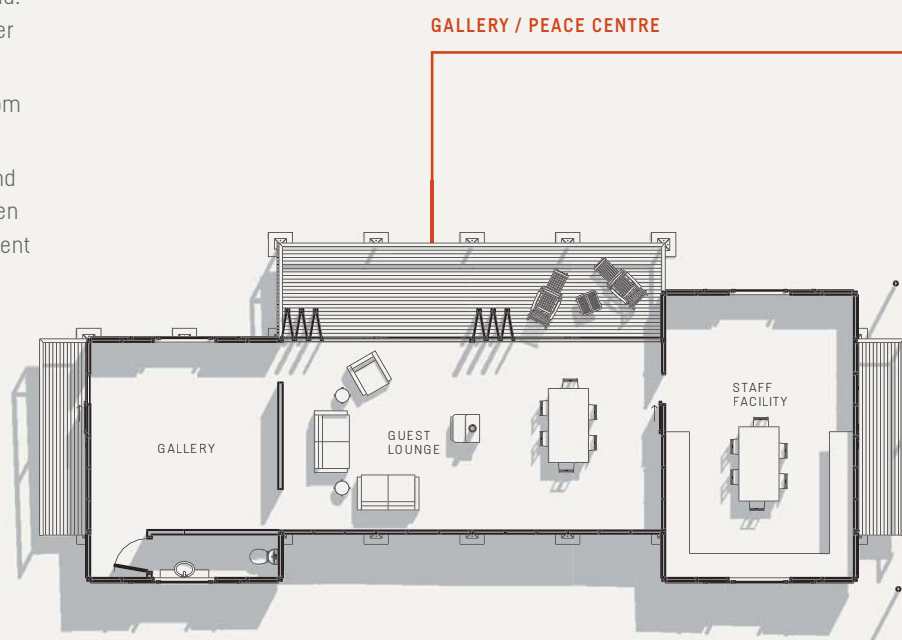
Sustainability and minimal impact underpin life, infrastructure and artistic endeavours at Windgrove. The proposed new facilities will build on this philosophy and complement the existing welcoming nature of the property as a whole.

Maintaining a small environmental footprint on the property has been critical in the thinking and planning of the proposed new infrastructure at Windgrove.

Ecoshelta buildings were chosen as the most sustainable way to provide on-site visitor accommodation. Constructed off-site and lowered onto prepared footings allows for minimal disturbance to the land. All electricity will be solar generated and rainwater will be collected from roofs.

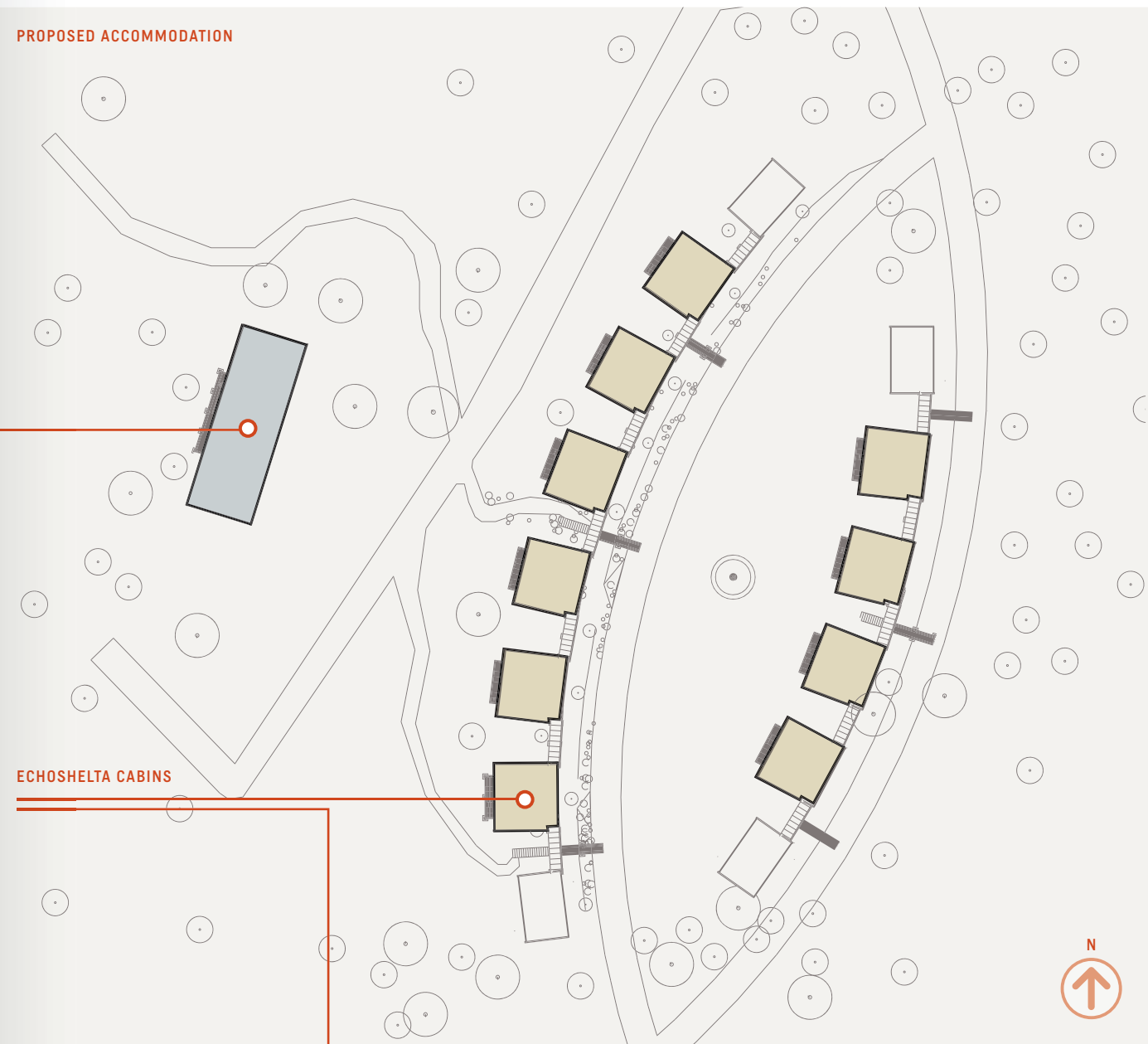
Ensuring that all new infrastructure is invisible from Roaring Beach and from the surf is paramount.

The property is in a coastal dry sclerophyll area and is frequently subject to strong winds. This has been a consideration in the design and planned placement of all buildings.

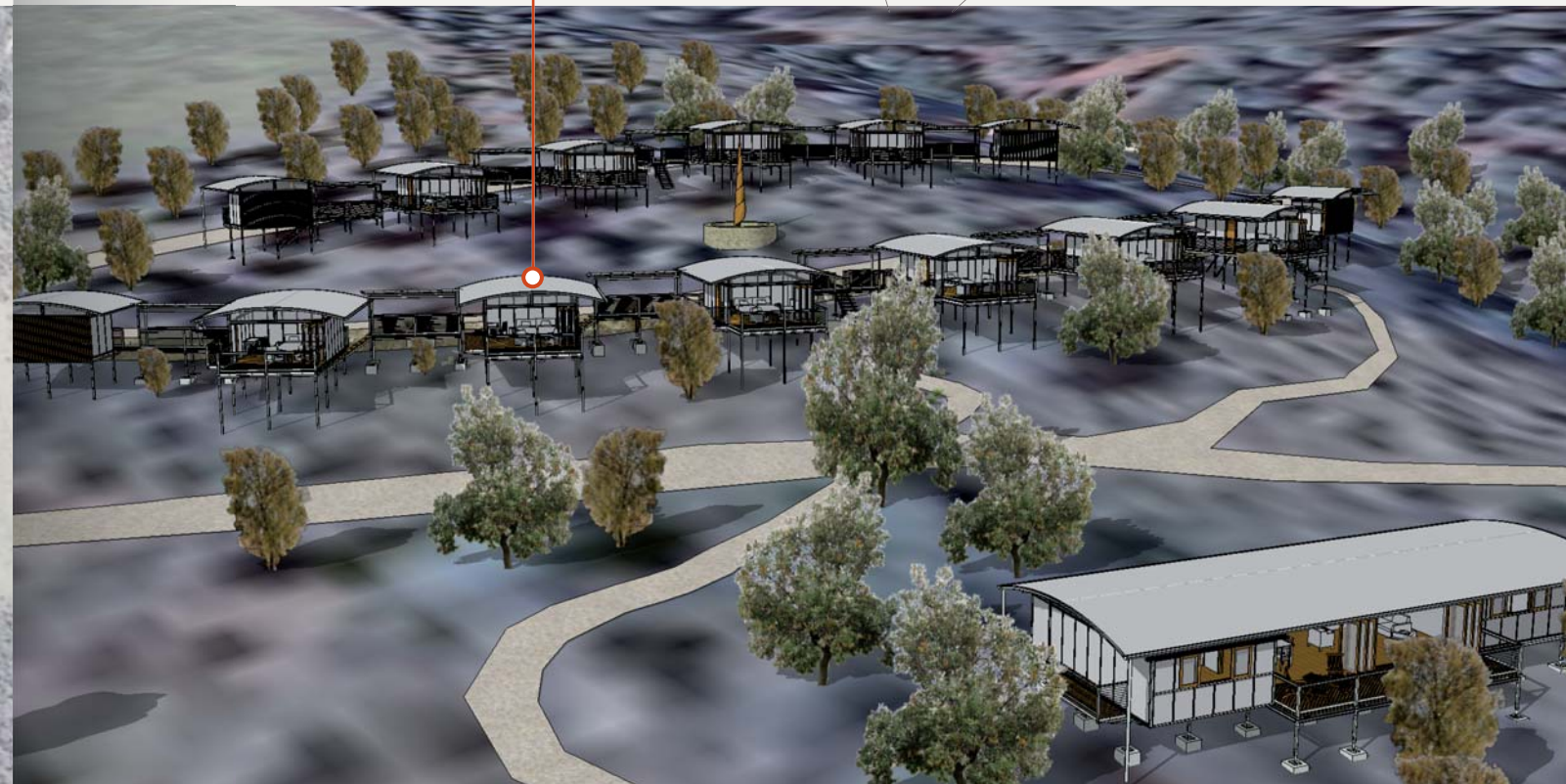


PROPOSED ACCOMMODATION

ECHOSHELTA CABINS



TREADING LIGHTLY



FOR PEOPLE AND THE ENVIRONMENT, NOT-FOR-PROFIT

To secure the future of Windgrove both within and beyond his own lifetime, Peter is establishing a Not-For-Profit entity to manage both the new proposed eco-development and the existing property in perpetuity.

In establishing the Not-For-Profit, Peter is bequeathing Windgrove along with the majority of his artistic output over the past 25 years: interior sculptures and furniture (including design copyright) and all outdoor site specific art works located at Windgrove. With a combined monetary valuation exceeding four million dollars, this gift will enrich the experience of visitors, add to Windgrove's educational potential, and better ensure its financial sustainability.



BECOME INVOLVED

You are invited to share in the vision by following the Windgrove blog at:

> [WINDGROVE.COM/BLOG/](https://www.windgrove.com/blog/)

And by joining our mailing list at:

> [WINDGROVE.COM](https://www.windgrove.com)

You can also view a short film about Windgrove at:

> [VIMEO.COM/119823682](https://vimeo.com/119823682) (edited version) *

> [VIMEO.COM/133123923](https://vimeo.com/133123923) (extended version) *

ALIGNMENT WITH GOVERNMENT OBJECTIVES

FEDERAL

The artistic and cultural activities of Windgrove are in alignment with the Federal Government's objective to: 'forge new creative and financial partnerships and stimulate innovative ways to build participation by Australians in our cultural life... enable access to high quality arts experiences in regional communities.*'

STATE

In line with Tasmanian Government's Cultural and Creative Industries Strategy, Windgrove will assist in ensuring that culture and creativity are an integral part of Tasmania's brand.

The State Government has a vision of 'a robust, diverse, vibrant arts sector in Tasmania which is valued by Tasmanians and which is nationally and internationally recognised'. Windgrove supports the vision by connecting Tasmanian and international artists and visitors through an innovative nature-based approach to the arts, overseen by Artistic Director Peter Adams, an internationally recognised sculptor and landscape artist. The Tasmanian Government is committed to growing jobs in the creative and cultural industries. Windgrove will directly create three new permanent administrative roles, will employ numerous workshop facilitators and guides, and will provide opportunities for several artists each year to increase their profile and share their work with learners of all ages through residential workshops.

LOCAL

Developing and promoting creative experiences on the Tasman Peninsula will assist in expanding the cultural profile of this region. The Peninsula's renown will be increased both nationally and internationally. The Tasman local government area 'strives to be a welcoming community with an unbeatable quality of life boasting a number of boating and sporting clubs with tourism services catering for all ages and interests'. Windgrove will contribute to the welcoming nature of the Tasman community. It caters for those who are keen to connect more deeply with nature and willing to create positive change in their lives. Windgrove will increase visitor numbers to the region and benefit local schools through enriched educational opportunities.

CONSULTANTS

- > **Founder, Artistic Director & CEO:**
Peter Adams
- > **Project Support:**
Wendy Armstrong
- > **Development & Planning Consultant:**
Andy Hamilton & Associates
- > **Architect & Builder:**
Stephen Sainsbury, Ecosheltas
- > **Landscape Architects:**
Jerry de Gryse, Inspiring Place
- > **Legal Adviser:**
Darren Sheen, Dobson Mitchell & Allport
- > **Accountant:**
Lowensteins Art Management
- > **Graphic Design:**
Lynda Warner
- > **Graphic Design Assistance:**
Tracey Diggins
- > **Website Design:**
Allan Moul, Summerhill Publishing

POTENTIAL PARTNERS

- > Local and statewide schools and colleges – including previous visiting groups
- > UTAS - Tasmanian College of the Arts
- > UTAS - Centre for Environmental Studies
- > Local and stateside tourism entities – eg. PATTA, Tourism Tas
- > Tasmanian tour companies
- > National and local companies /organisations interested in investing in the Arts and/or supporting staff personal development
- > MONA Arts Nature tours
- > Tasman Ecovillage

FOR MORE INFORMATION CONTACT

- > Artistic Director: Peter Adams
peter@windgrove.com
Telephone: +61 03 6250 1001
- > Project Support: Wendy Armstrong
wendyintas@gmail.com
Mobile: 0408 140 295

WINDGROVE.COM

We invite you to share our vision

